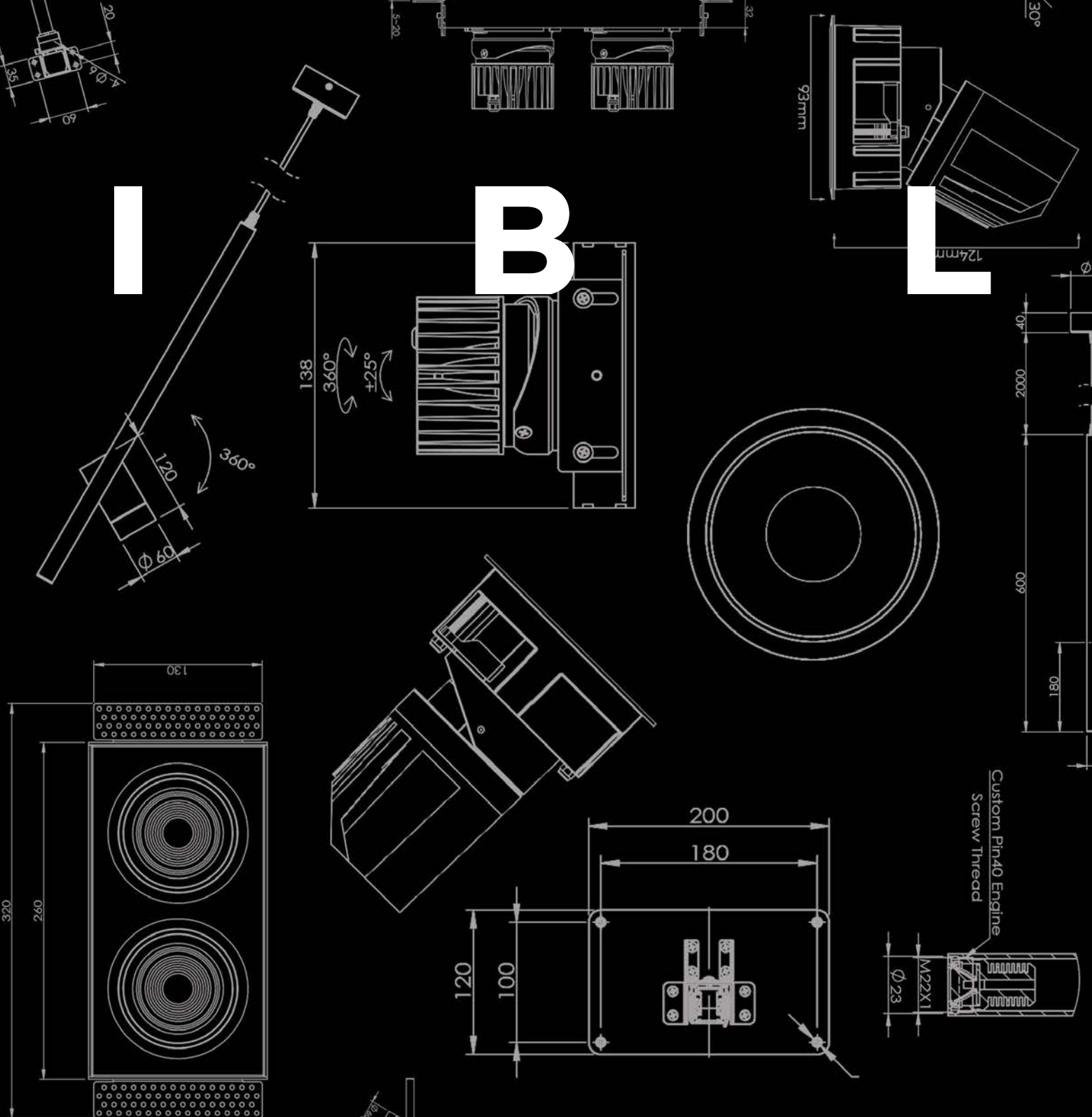


I

B

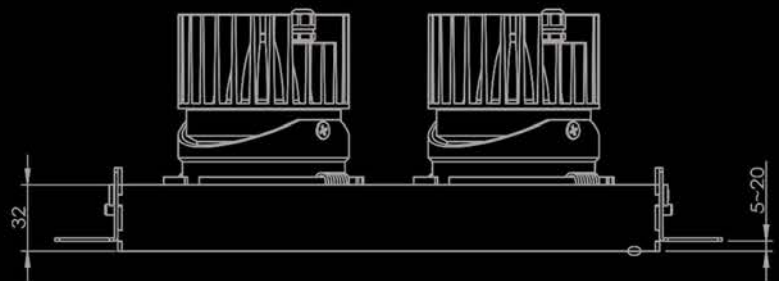
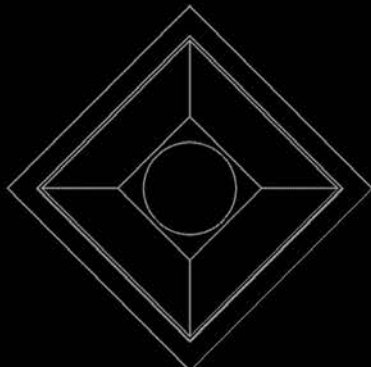
L



Custom Pin40 Engine
Screw Thread

G A Z E T T E

Volume Two — 2019



IBL

UK

1 Home Barn Court,
The Street,
Effingham,
Surrey,
KT24 5LG,
United Kingdom
t: 0844 822 5210
f: 0844 822 5211

DISTRIBUTORS:

IBL Lighting

United Kingdom
info@ibl.co.uk

Light Project

Australia
info@lightproject.com.au

Hong Kong

Unit B,
Shing Fung Industrial
Park, Hong Kin Road,
DD212 L8, Sai Kung,
New Territories,
Hong Kong
t: +852 2763
1255/1256
f: +852 2763 1262

Creative Lighting Asia

Hong Kong
hongkong@cla.asia

Tectronics

UAE
info@tectronicsme.com

Mark Herring Lighting

New Zealand
www.lights.co.nz

LSI

India
www.lsiindia.com

 www.ibl.co.uk

 IBL Lighting

 @IBLLighting

 IBL Lighting

CONTENTS

Welcome - Andrew Penfold, CEO	04
Featured Project – Dollar Bay	06
CREE XP-G3 Chips	16
Architectural Recessed Downlights	18
Featured Project – Mercedes Me	24
Custom Product Design	30
Featured Project – Husk & Vine	32



WELCOME

Andrew Penfold, Founder and CEO

The last 12 months have seen some very exciting developments at IBL. We have rolled out over 100 new products and product variations, worked on some challenging major international projects and expanded our team, both in our factory and in the UK.

The existing program of LED retrofit work has now also expanded, with the addition of new fittings using new technology to replace old metal halide downlights in office lobbies and shopping centres. These fittings have now been rolled out in Australia, the UK and more recently in Hong Kong.

Our custom design service has grown dramatically since the last issue of the Gazette. As such, we have employed a dedicated design engineer to keep up with the growing demand from lighting

designers in all regions for bespoke lighting solutions. The IBL website has been updated several times over the last six months, with new product additions and new information, including improvements to our product configurator and the ability to create and download custom product/project data sheets.

The featured product group in this edition will be the new IBL range of architectural recessed downlight fixtures, launched in August last year. We also feature new information on our ever-expanding range of custom-designed fixtures.

This edition of the Gazette also includes a brand new technical section. This includes information on the latest developments from our major supply partner, CREE, and details how IBL has adapted the LED chip technology developed by CREE for use in our fittings.

One of our main featured projects in this edition is Dollar Bay, an upscale residential development on the River Thames in London. This was developed by leading UK developers, Mount Anvil. We

also feature some other fantastic projects from around the world.

2019 promises to be another exciting year for IBL and our global partners. We already have plans for several new families of products throughout 2019, as well as expanding both the warm dim and colour tuning technology in our downlights and lineal range.

As always, IBL continues to take our lead from our customers and partners. We thank you for your continued support and hope you enjoy this edition of the IBL Gazette.

Andrew Penfold
Director

Featured Project:

DOLLAR BAY

South Dock, London

The Dollar Bay complex is a recent residential development by Mount Anvil. The complex boasts 115 apartments and penthouses with impressive and unmatched views of the London cityscape.

The project features over 3000 fittings supplied by IBL, including a variety of downlights and linear LED profile.



FEATURED PROJECT: DOLLAR BAY DEVELOPED BY MOUNT ANVIL

During development of the Dollar Bay complex, IBL worked closely with UK developers Mount Anvil.

Mount Anvil is one of London's most respected developers, working on a variety of residential properties in the area over the last 30 years.

They also work internationally with world-

class architects and consultants, and act as both a developer and a consultant on all their projects.

Dollar Bay is just one of many Mount Anvil developments that are all located in the most desirable locales across London.

IBL has worked with Mount Anvil on other similar developments, such as the Royal

Docks West complex near Canary Wharf. The building features over 100 homes across 20 storeys and uses a variety of IBL fittings and downlights, including the Square 80 Straight, Cone 80, Round 80 Straight and Round Tilt 90 Flat.



Ridge Low Profile 15x6mm
6915066



Square 80 Straight
264X



IP68 24V LED Tape
LED3528



FEATURED PROJECT:
DOLLAR BAY



Square 80 Straight
264X



White Line 23x14mm
6723146

FEATURED PROJECT: **DOLLAR BAY**

The Dollar Bay complex stands tall, illuminating the London cityscape along the river Thames.



FEATURED PROJECT: **DOLLAR BAY**



IP68 24V LED Tape
LED3528



Round 40
226X



Ridge Low Profile 15x6mm
6915066



Round 40
226X

CREE XP-G3

THE NEXT GENERATION OF LED CHIPS

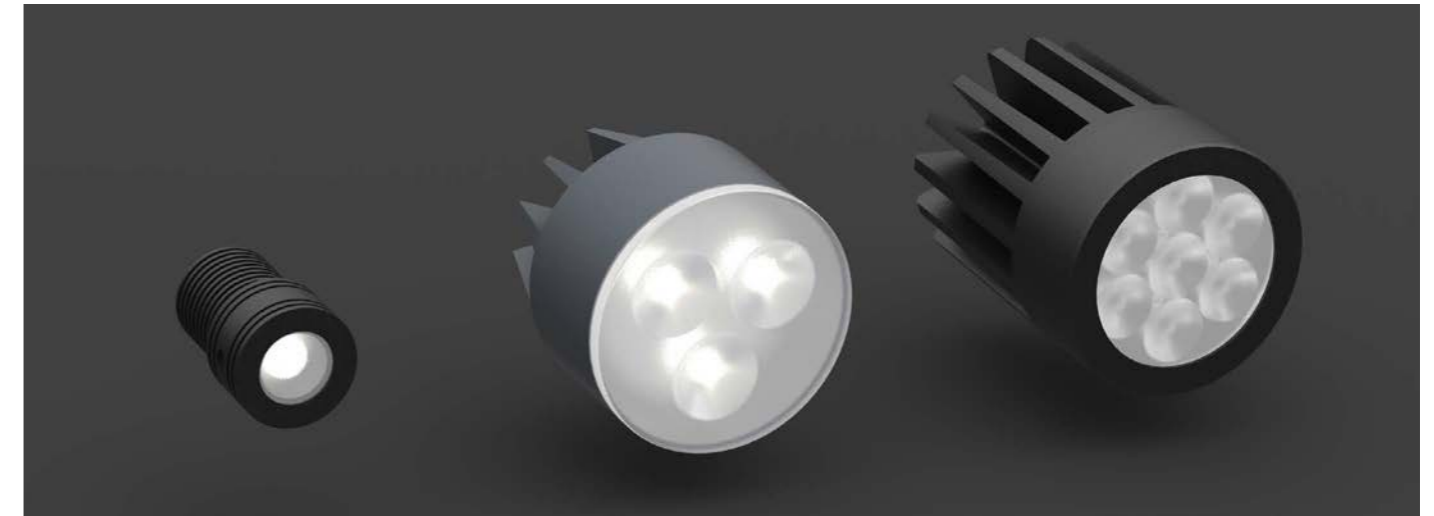
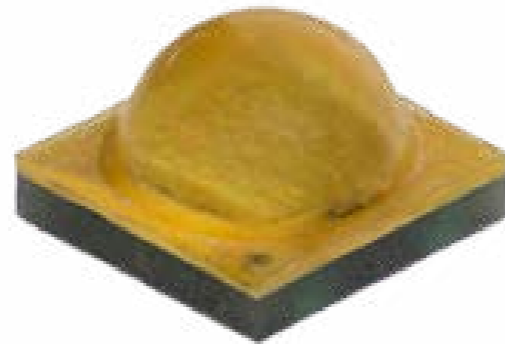
IBL have supported CREE LED technology since it was first used in commercial lighting applications. Initially, we incorporated the CREE XR-E chip into the IBL 3X multi-chip lens-based downlights. Then, as IBL expanded the range to include both 4-chip and 7-chip options for our engines, we were the first to use the XP-G and, soon after, the XP-G2 LED chips.

CREE have now released the XP-G3. According to information published by CREE, These LEDs are optimized for directional, high lumen lighting applications where efficacy and optical control are critical. The compact and proven 3.45 mm XP platform has an excellent ecosystem of optics and system solutions available, enabling lighting manufacturers like IBL to simplify their design process and shorten time to market.

The new S Line version improves on the Standard version: better system level reliability through switching and dimming cycles, improved resistance to sulfur exposure and higher efficacy. With this S Line version, Cree delivers high-power LED technology optimized for long-lifetime general lighting applications

where sensors and the internet of things (IoT) are becoming common.

XP-G3 LEDs are available in Royal Blue and two different White versions. White (Standard) delivers best-in-class TM 21 lifetimes and colour stability over time. White (S Line) improves on the Standard version: better system level reliability through switching and dimming cycles, improved resistance to sulfur exposure and higher efficacy. With this S Line version, Cree delivers high power LED technology that is optimized for robust lighting applications where sensors and the internet of things (IOT) are becoming common.



Key features of the new CREE XP-G3 chip include:

- Available in no CRI minimum white, 70-, 80- and 90-CRI white, and royal blue
- ANSI-compatible chromaticity bins
- Standard binned at 85 °C, royal blue binned at 25 °C
- Maximum drive current: 2000 mA
- Low thermal resistance: white: 3 °C/W, royal blue: 2 °C/W
- Wide viewing angle: 125° - 130°
- Unlimited floor life at ≤ 30 °C/85% RH
- Reflow solderable - JEDEC J STD 020C
- Electrically neutral thermal path
- RoHS and REACH compliant • UL® recognized component (E349212)

IBL has always incorporated the CREE XP-G LED chip in our multi chip lens-based engines. The CREE XP-G chips are robust, reliable and meet all of the exacting criteria that IBL require when designing downlights. The 50mm IBL LED engine footprint allows us to take full advantage of the range of colours and works perfectly with IBL lens-based optics.



FEATURED PRODUCT GROUP:
ARCHITECTURAL
RECESSED DOWNLIGHTS



In late 2018, IBL released a new range of architectural downlights. The new CONE Tilt fittings use deep recessed reflectors, hiding the source of light.

Each downlight is fitted with an IBL LED engine that can accommodate 9W, 13W, 20W, 25W and 31W LED engines, with a choice of optics.

The new CONE Tilt fittings offer reflectors finished in silver, gold, white and black, along with trim-less "plaster-in" models and square reflectors options.



The Ivy City Garden Bar, Shoreditch, London
Design by Martin Brudnizki Design Studio

FEATURED PRODUCT GROUP: ARCHITECTURAL ROUND FITTINGS



Cone Tilt 95

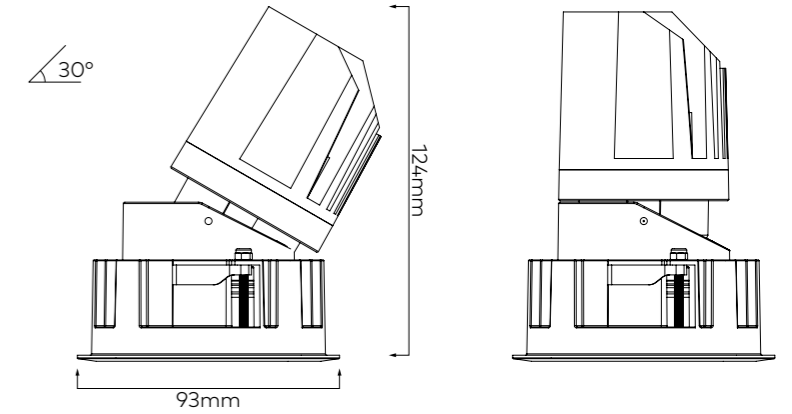
*Black bezel with
chrome reflector*

Cone Tilt 115

Cone Tilt 135



Cone Tilt 135 Trimless



Cone Tilt 95



Cone Tilt 95

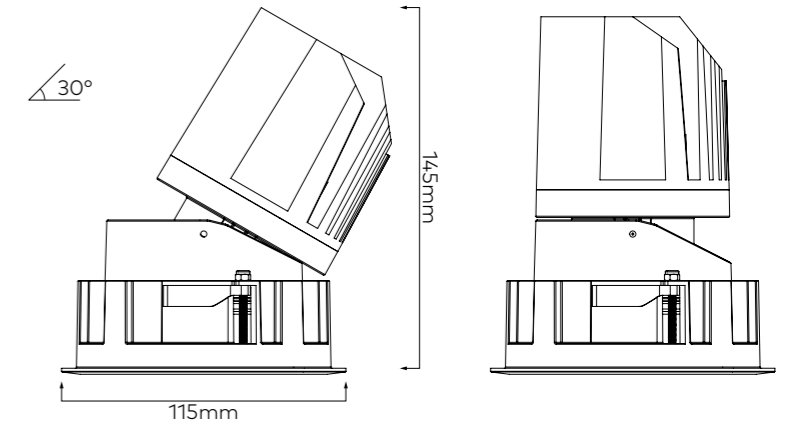
*Black bezel with
gold reflector*

Cone Tilt 115

Cone Tilt 135



Cone Tilt 135 Trimless



Cone Tilt 115



Cone Tilt 95

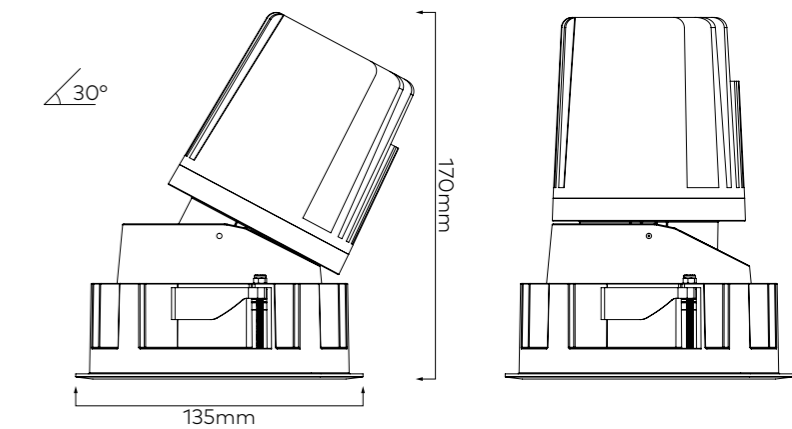
*Black bezel with
black reflector*

Cone Tilt 115

Cone Tilt 135



Cone Tilt 135 Trimless



Cone Tilt 135

FEATURED PRODUCT GROUP: ARCHITECTURAL SQUARE FITTINGS



Cone Tilt Square 95
*Black bezel with
chrome reflector*



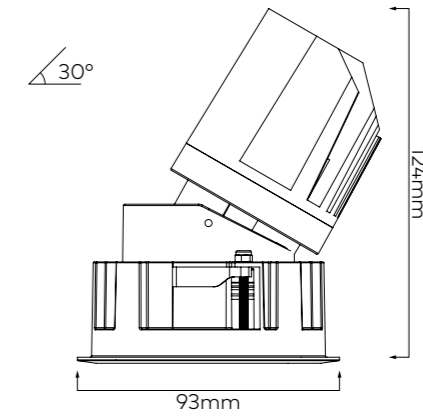
Cone Tilt Square 115



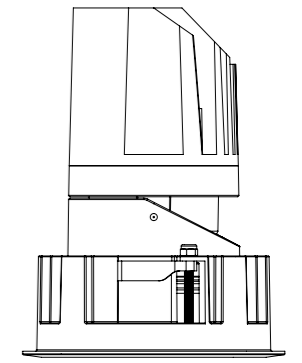
Cone Tilt Square 135



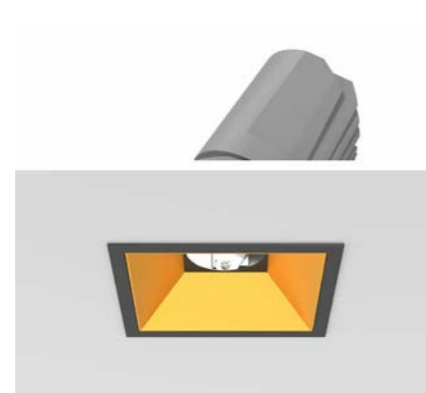
Cone Tilt Square 135 Trimless



Cone Tilt Square 95



Cone Tilt Square 95
*Black bezel with
gold reflector*



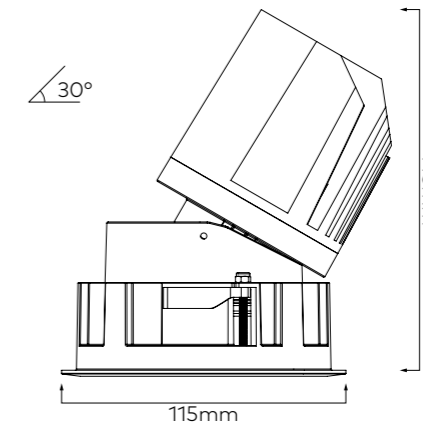
Cone Tilt Square 115



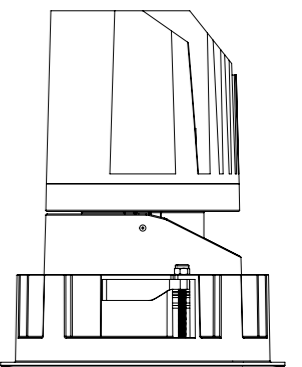
Cone Tilt Square 135



Cone Tilt Square 135 Trimless



Cone Tilt Square 115



Cone Tilt Square 95
*Black bezel with
black reflector*



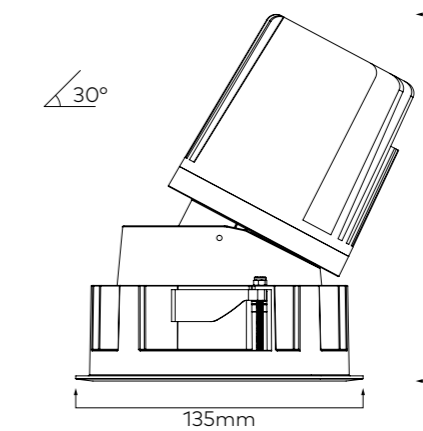
Cone Tilt Square 115



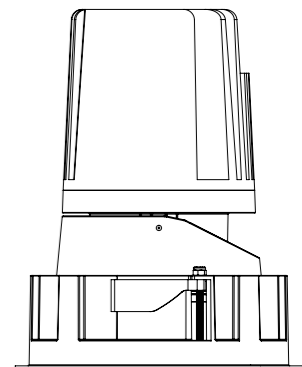
Cone Tilt Square 135



Cone Tilt Square 135 Trimless



Cone Tilt Square 135



MERCEDES ME

CAFÉ AND SHOWROOM

MELBOURNE

Lighting Design by Point of View

Design by JCB



MERCEDES ME CAFÉ AND SHOWROOM

Melbourne recently became home to Australia's first Mercedes Me store, where café culture meets showroom.

Featuring lights by IBL, the Mercedes Me store in Melbourne joins a host of similar outlets across the world, including Munich, Hamburg, Hong Kong, Tokyo and Moscow.

During the day, the store serves as a hybrid café – run by Australian hospitality partners and coffee roasters ST ALi – and showroom.

At night, the store serves as a venue for special events and collaborations across art, food, design and more.

The space features a variety of IBL fittings, including CAN 140 downlights, PIN 40 downlights and IBL LED Tape.





Can 100
245X



Can 140
246X



2835 24V LED Tape
645X



Pin 40
228X

CUSTOM PRODUCT DESIGN

The range of standard IBL products is vast. However, many of our clients still require bespoke fittings to suit their specific design requirements.

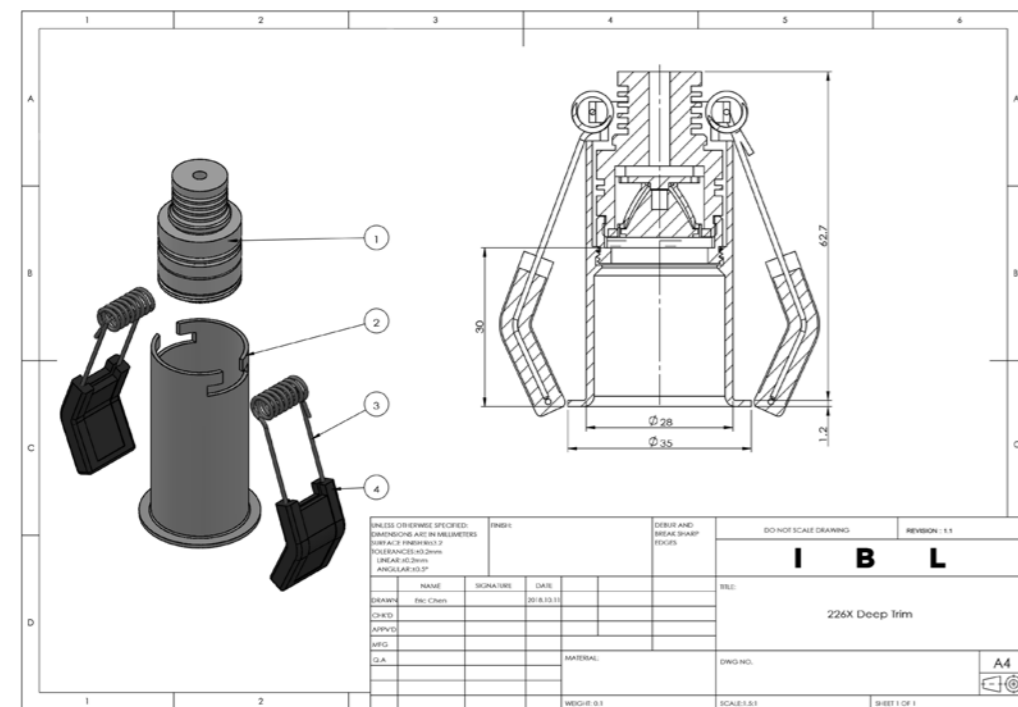
IBL has both the technology and the experience to realise many of these custom requirements of our clients.

Custom product design has become a standard feature offered by IBL. Using existing IBL technology, we are able to produce special housings and fixtures that utilise our range of IBL LED engines.

Clients come to us with their ideas, from which we produce detailed drawings, listing all components and dimensions. Once approved, the product is manufactured. These schematics represent examples of this process with past clients.

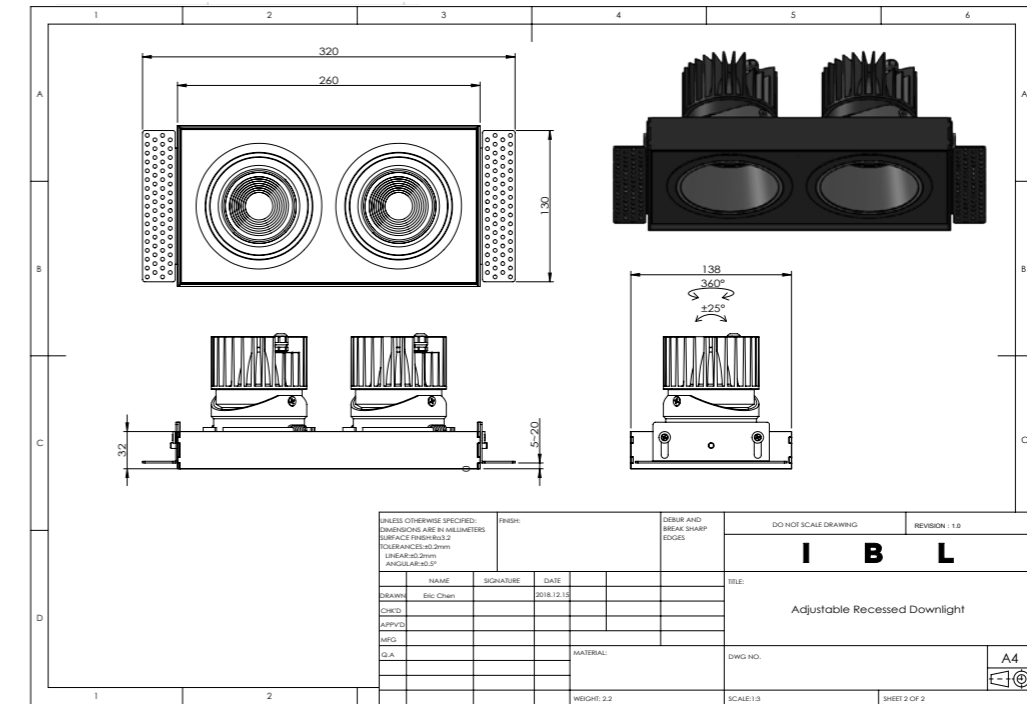
DEEP TRIM MICRO-CONE DOWNLIGHT

Featuring an IBL 2W LED engine. Suitable for all ceiling types.



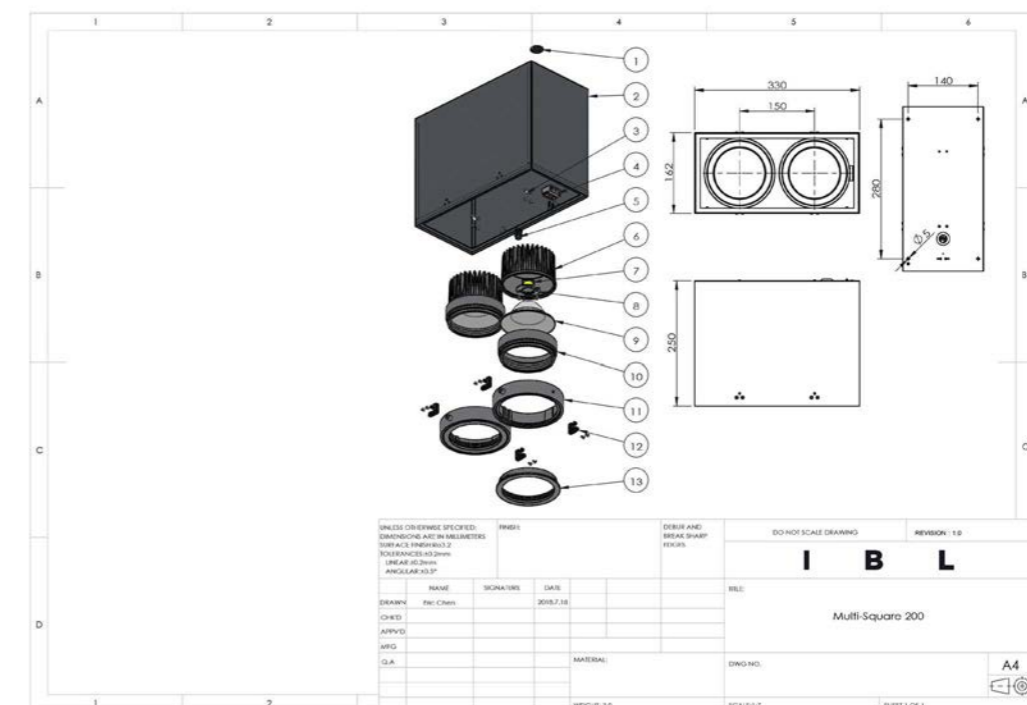
ADJUSTABLE RECESSED PLASTER-IN MULTI-HEAD FITTING

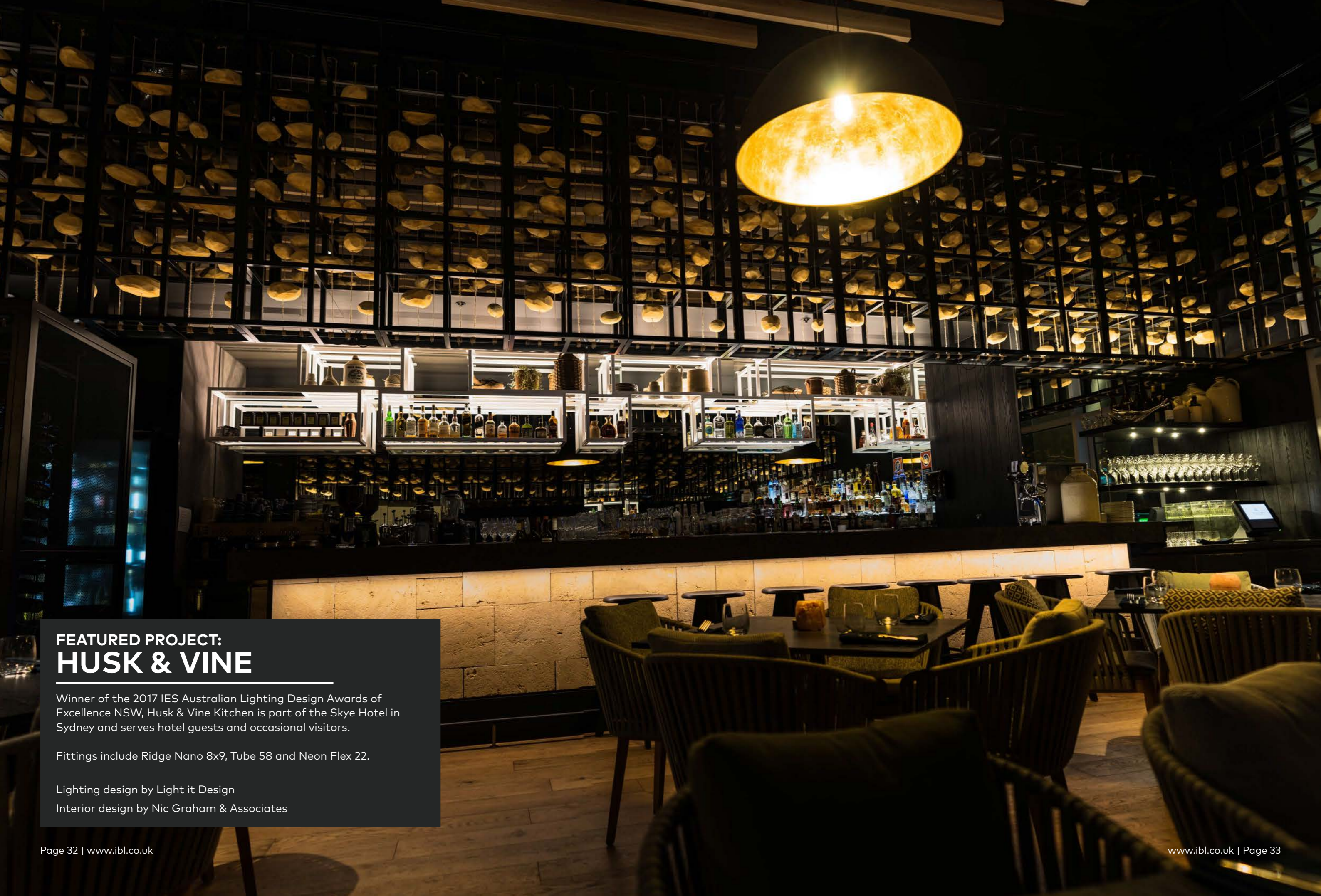
Array LED engine suitable for 12W, 19W or 25W COB LED. Available as single, twin or triple fitting. Remote power supply. Custom colour finish.



TWIN GIMBAL SURFACE MOUNTED LED DOWNLIGHT

Features integral drivers and multiple optic accessories.





FEATURED PROJECT:
HUSK & VINE

Winner of the 2017 IES Australian Lighting Design Awards of Excellence NSW, Husk & Vine Kitchen is part of the Skye Hotel in Sydney and serves hotel guests and occasional visitors.

Fittings include Ridge Nano 8x9, Tube 58 and Neon Flex 22.

Lighting design by Light it Design

Interior design by Nic Graham & Associates

FEATURED PROJECT:

HUSK & VINE

Q&A WITH RAFFAELE DE VITA PRINCIPAL OF LIGHT IT DESIGN

What was the brief for this project and how the brief has been translated to the space?

The Husk & Vine is part of the 5 Stars Services Apartments & Suites by Skye Hotels. The Client, the Crown Group, had a really clear brief: the restaurant should serve not only guests of the Skye Hotel but also attract visitors from other areas of Sydney. This brief was similar to the one received for the Ovolo Hotel in Woolloomooloo, on a different scale. The award-winning experience of the lighting design for the Ovolo Hotel was a great starting point for this boutique restaurant.

What was your inspiration for this project?

When working on a lighting design concept, at Light it Design, we work really closely with the interior design team to support and enhance the broader vision for the place. In this instance, the lighting creates an environment that varies across the day - from breakfast, to lunch, to cocktail time, to dinner, helping in refreshing the experience of repeated guests and reflecting the movement of light outside.

What were the challenges in designing this space?

The project lasted less than 5 months from concept to completion, and although it was a small project, we took it seriously. It was a battle to keep the fitting specifications to plan, which included the beautiful pendants with gold leaf.

Light it Design was in regular contact with lighting suppliers to ensure budgets were met, and fittings were delivered to the right location and within a suitable lead time. Light it went also beyond the call of duty

after completion, when the client was unable to open the restaurant because the lighting control system was not properly installed by another party. The client could not dim downlights with the different pre-set scenes. Mood is everything for a restaurant, so you can understand the gravity of the situation. Light it Design brought on board our own trusted electrician and, at no charge to the client, added the missing control system parts, re-commissioned the lighting, and allowed the client to open the restaurant on time for the launch.

We always make sure the lighting is perfectly commissioned. Design is a portion of the process, problem solving is what makes a project successful.

What is the impact of the light in the space and how did you reach the desired result?

With a series of layers of lighting we created different "mood opportunities".

Linear fittings were placed around the perimeter stone structure to recreate the effect of the sunrise for breakfast and the sunset for dinner. Narrow beam adjustable spot lights in the same structure recall the "V" logo of Skye Hotels.

Track lights in between timber battens with antiglare technology provide for general lighting.

Joinery lighting adds that "lounge" feeling to the space - ideal for a date or time with a dear friend for dinner at the Husk & Vine. The pendants, with the touch of real gold leaf, recalls the idea of sophistication and luxury, reinforcing the contemporary menu offered at the restaurant.



CREDITS

IBL Gazette

Produced and published by IBL Lighting

Edited by Harry Baker

Renderings by Gavin Lamport

Design and Layout by Harry Baker

Husk & Vine

Photos provided by Light it Design

Lighting design by Light it Design

Interior design by Nic Graham & Associates

Special thanks to Raffaele De Vita

Dollar Bay

Developed by Mount Anvil

Design by SimpsonHaugh

Photos courtesy of Matt Livey and Mount Anvil

Mercedes Me

Photos courtesy of Firefly Point of View

Lighting design by Firefly Point of View

Design by JCB

I B L
G A Z E T T E

Edited and Designed by
Harry Baker

Published by
IBL Lighting

