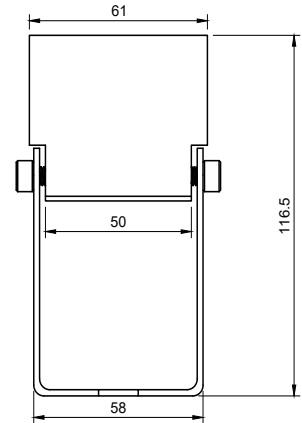
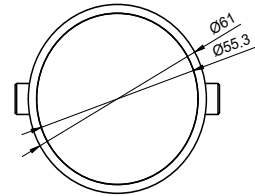


Description:

Directional HO Surface Mount Spotlight, 9Watt Bridgelux V8 Gen-7, Various colour temperatures, beam angles and finishes. Machined solid brass or Machined Aluminium 6061 body, Borosilicate Glass Lens, pre-fitted Honey Comb Baffle, Resin Sealed Cable Gland, Stainless Steel hinge Screws, pre-fitted Double insulated exterior rated cable, Surface mount bracket for gardens. IP67.



Technical:

LED TYPE	Bridgelux V8 Gen-7	CONTROL GEAR	REMOTE
RATED POWER	9W	DIMMING PROTOCOL	DALI - 0-10V - PHASE DIM - ON/OFF
CRI	80	CABLE LENGTH	500MM STANDARD LENGTH
BEAM ANGLES	NOMINATED IN TABLE BELOW	MOUNTING OPTIONS	SURFACE/ SPIKE
INPUT POWER / FORWARD VOLTAGE	350mA / 18V DC	WEIGHT	0.8KG
NOMINAL LUMENS	1485lm	HARDWARE	GLASS LENS, O-RING, GLAND, CABLE
IP RATING	IP65	CONSTRUCTION	MACHINED METAL & HEATSINK
COLOUR TEMPERATURE	2700K - 3000K - 4000K	WARRANTY	2 YEARS

Product Generator: example 1606-AB-M-30-SM-9W-DALI-HC

Model	Finish	Beam Angle	CCT	Mounting	Wattage	Dimming	Accessory
NL1606	AB Aged Brass	N Narrow 16°	27 2700K	SM Surface Mount	9W / 350mA	DALI	HC Honeycomb Louver
	BR Brushed Brass	M Medium 22°	30 3000K			0-10V	DL Diffuser Lens
	SS Stainless Steel	W Wide 33°	40 4000K			Phase	EL Elliptical Lens
	PB Black					On/Off	SL Spread Lens
	PW White						SP Spike
	CC Custom						

NL1606	-		-		-		-	
--------	---	--	---	--	---	--	---	--