

## FLEX STAINLESS STEEL

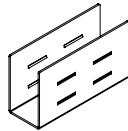
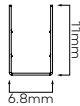
### FLEX 5 HORIZONTAL



#### ORDERING INFORMATION

MODEL	TYPE	LENGTH	
<b>63S05H</b> Neon Flex 5 Horizontal	<b>SC</b> Stainless Steel	<b>.0007</b>	7mm
<b>63S05H</b>	<b>SC</b>		

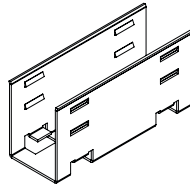
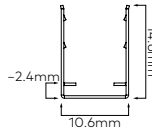
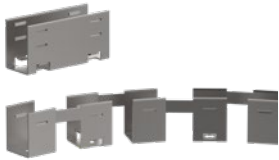
### FLEX 6 HORIZONTAL



#### ORDERING INFORMATION

MODEL	TYPE	LENGTH	
<b>63S06H</b> Neon Flex 6 Horizontal	<b>SC</b> Stainless Steel	<b>.0020</b>	20mm
<b>63S06H</b>	<b>SC</b>		

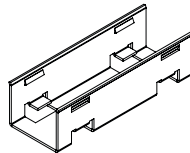
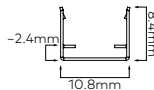
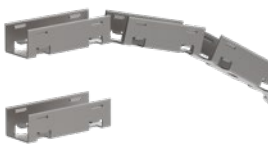
### FLEX 10 HORIZONTAL



#### ORDERING INFORMATION

MODEL	TYPE	LENGTH	
<b>63S10H</b> Neon Flex 10 Horizontal	<b>SC</b> Stainless Steel	<b>.0030</b>	30mm
		<b>.1000</b>	1000mm
<b>63S10H</b>	<b>SC</b>		

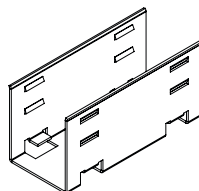
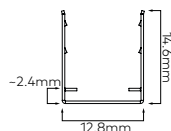
### FLEX 10 VERTICAL



#### ORDERING INFORMATION

MODEL	TYPE	LENGTH	
<b>63S10V</b> Neon Flex 10 Vertical	<b>SC</b> Stainless Steel	<b>.0030</b>	30mm
		<b>.1000</b>	1000mm
<b>63S10V</b>	<b>SC</b>		

### FLEX 12 HORIZONTAL

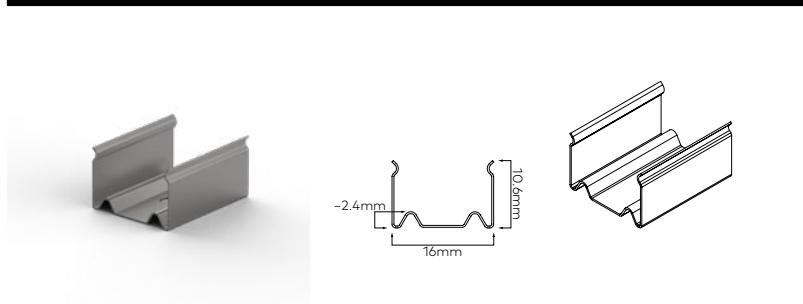


#### ORDERING INFORMATION

MODEL	TYPE	LENGTH	
<b>63S12H</b> Neon Flex 12 Horizontal	<b>SC</b> Stainless Steel	<b>.0030</b>	30mm
		<b>.1000</b>	1000mm
<b>63S12H</b>	<b>SC</b>		

## FLEX STAINLESS STEEL

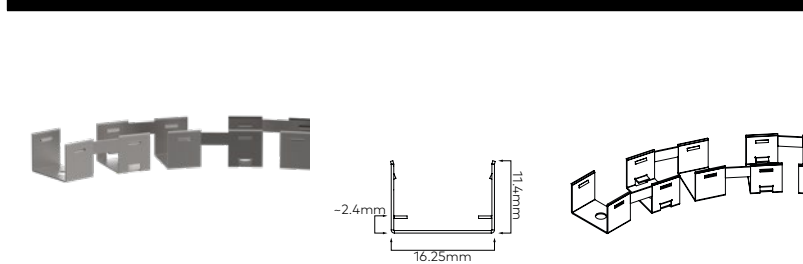
### FLEX 5 HORIZONTAL (SINGLE CLIP)



#### ORDERING INFORMATION

MODEL	TYPE	LENGTH	
<b>63S15H</b> Neon Flex 15 Horizontal	<b>SC</b> Stainless Steel	<b>.0020</b>	20mm
<b>63S15H</b>	<b>SC</b>	<b>.0020</b>	

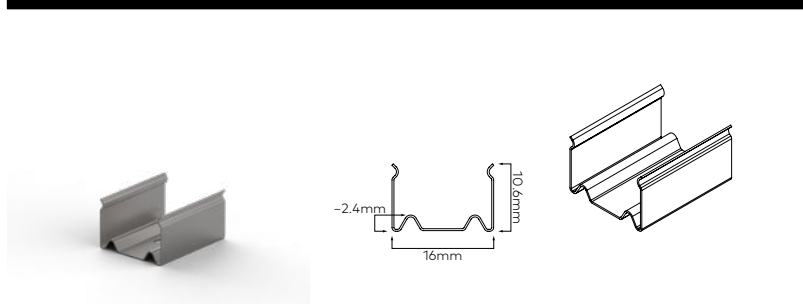
### FLEX 15 HORIZONTAL



#### ORDERING INFORMATION

MODEL	TYPE	LENGTH	
<b>63S15H</b> Neon Flex 15 Horizontal	<b>SC</b> Stainless Steel	<b>.1000</b>	1000mm
<b>63S15H</b>	<b>SC</b>	<b>.1000</b>	

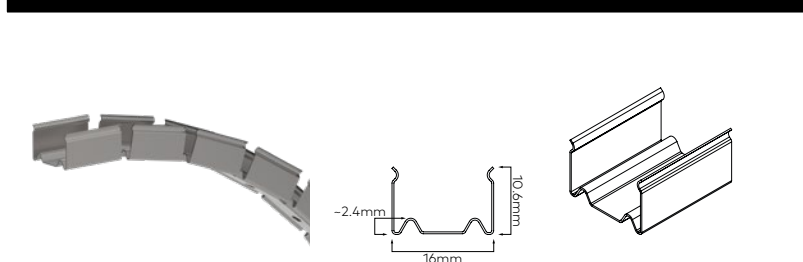
### FLEX 15 VERTICAL (SINGLE CLIP)



#### ORDERING INFORMATION

MODEL	TYPE	LENGTH	
<b>63S15V</b> Neon Flex 15 Vertical	<b>SC</b> Stainless Steel	<b>.0020</b>	20mm
<b>63S15V</b>	<b>SC</b>	<b>.0020</b>	

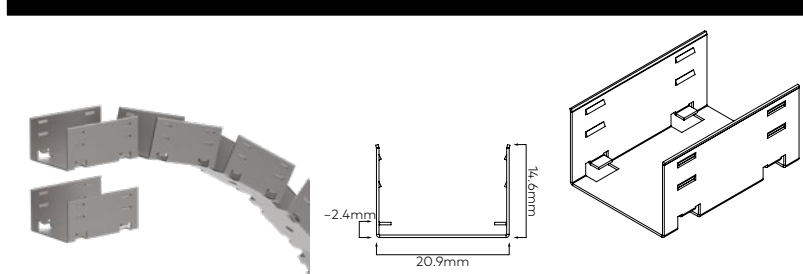
### FLEX 15 VERTICAL



#### ORDERING INFORMATION

MODEL	TYPE	LENGTH	
<b>63S15V</b> Neon Flex 15 Vertical	<b>SC</b> Stainless Steel	<b>.1000</b>	1000mm
<b>63S15V</b>	<b>SC</b>	<b>.1000</b>	

### FLEX 20 VERTICAL



#### ORDERING INFORMATION

MODEL	TYPE	LENGTH	
<b>63S20V</b> Neon Flex 20 Vertical	<b>SC</b> Stainless Steel	<b>.0030</b>	30mm
<b>63S20V</b>	<b>SC</b>	<b>.1000</b>	1000mm